

C7 REAR FASCIA LED KIT

Helpful tools

Plastic panel removal tool

7mm socket

#15 torx socket

razor blade

drop light

pliers

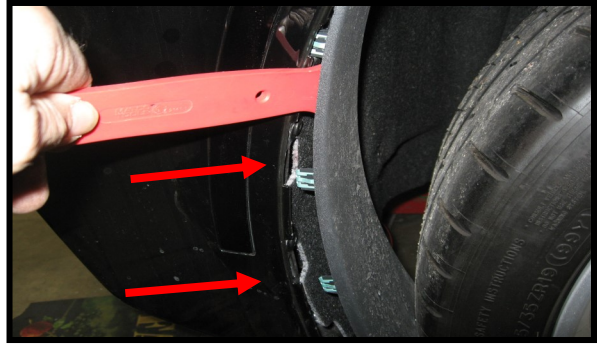
plastic tie straps

Jack and jack stands

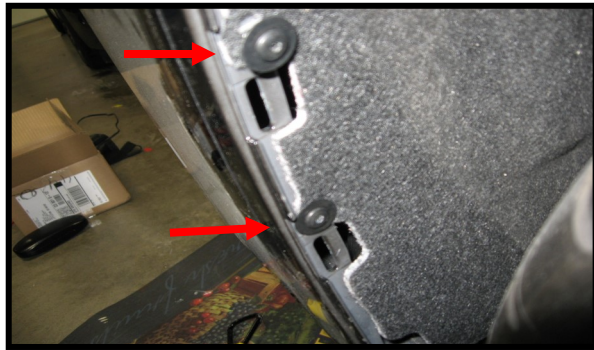
black electrical tape



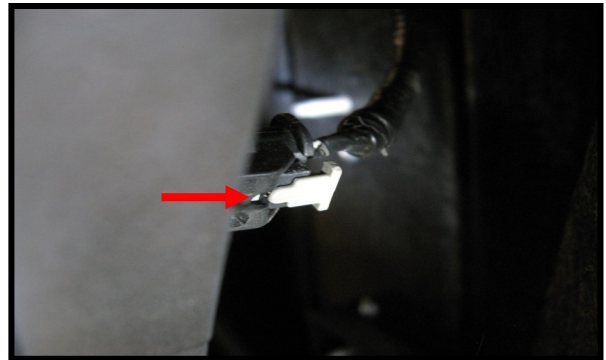
Raise rear of vehicle and support with jack stands. Locate this 7mm screws behind the rear wheels and remove on both sides of car.



Using the panel removal tool, pry the splash shield off. It pops off easily.



Remove these #15 torx screws behind the splash shield for access to the rear side marker connector. Pull the panel back and secure it with bunge cords to gain access to the rear side marker.

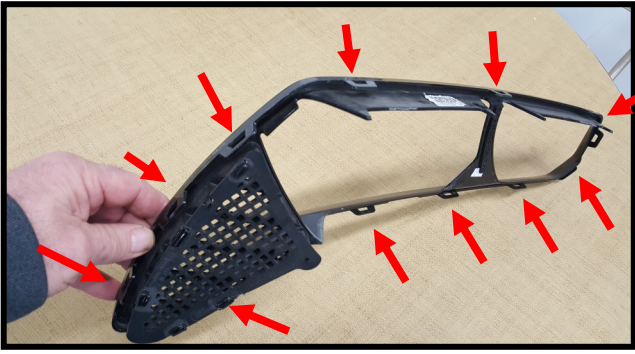


This shows the rear side marker connector. Slide the white tab as shown to unlock the connector from the housing. Pull the connector out so you can wire the leds. If you can't pull the wires out far enough to wire, there are additional harness retainers you can release after removing the tail light bezel.



Carefully insert the panel removal tool between the taillight bezel and the rear fascia, pry down while pulling the bezel out. Work your way around the bezel releasing the tabs holding the bezel in place. See next page for clarification.





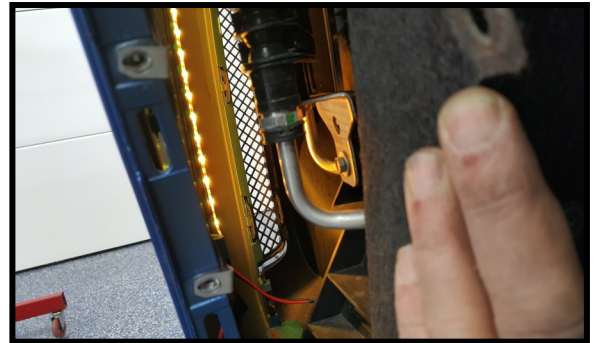
This shows the mounting tabs you are trying to release. There are 3 on top, 4 on the bottom and 2 on each side. Always pull out on the bezel as you are releasing the tabs.



You can use a shop towel or tape the painted area below the bezel to protect the paint.



There are 2 retaining tabs on each side. You can use a hooked tool to pull out while you release the tabs. Once the bezel is removed drop the led wires down to the rear side marker connectors you previously disconnected.



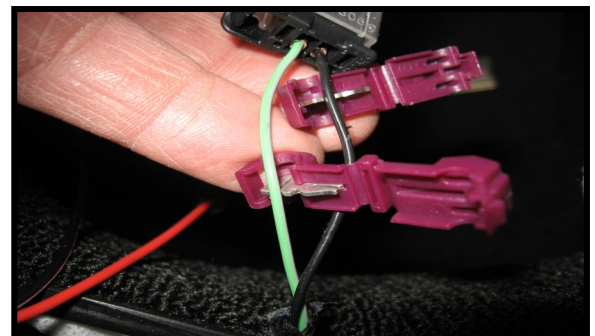
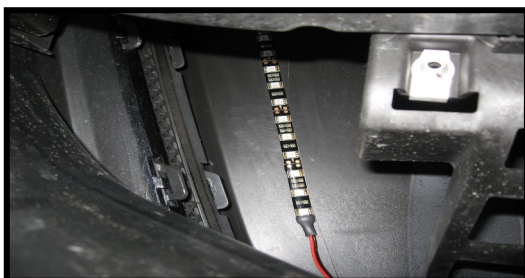
Looking through the quarter panel you can see the lower rear grills. There are 3 tabs on each side you need to release to remove it. Release the bottom ones then pull out while you release the rest of them. Get the top 2 through the taillight opening



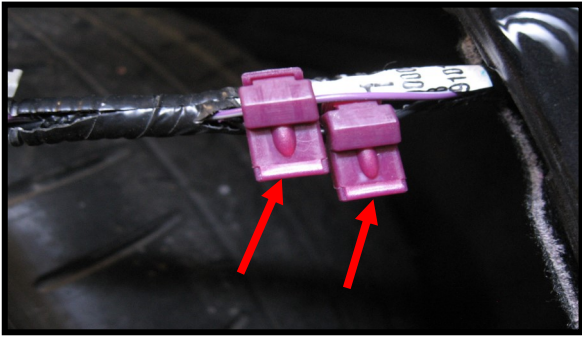
This is looking down through the taillight opening to show where to mount the side led strips. Mount them a couple inches forward of the vents. Wipe with alcohol then apply adhesion promoter sparingly. Center the strips in the openings and peel the backing off to apply. Always tape the cables to the panel to prevent the strips from pulling off. (red arrows). Repeat on both sides.



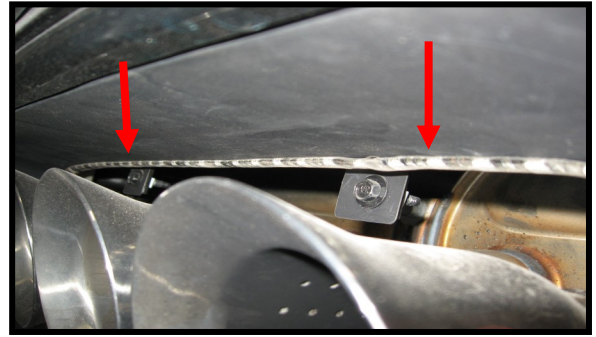
Now split the side marker harness open and pull the wires out for access.



Place one wire in each of the supplied quick tap connectors, fold shut and close with pliers until they latch. The wires you see will be purple or brown and black.



Now plug in the led wires into the back of the quick tap connectors. drivers side: Plug red led wire into purple wire, black to black. Passenger side: Plug red led wire into brown wire, black to black. Don't forget to plug the connectors back into the rear markers before you move on.



This shows where to mount the exhaust led strip. Clean mounting area with alcohol pad and prep with adhesion promoter before peeling the backing and mounting the strip. Wire tie all the wires up and away from the exhaust. Come back and press the strip into place to be sure it is secure.

Turn on the lights to test the led strips. After all is working, re-attach the factory wiring and tape up connectors and wires with black electrical tape. Re assemble all panels in the reverse order of disassembly. Panels easily snap back into place.

